

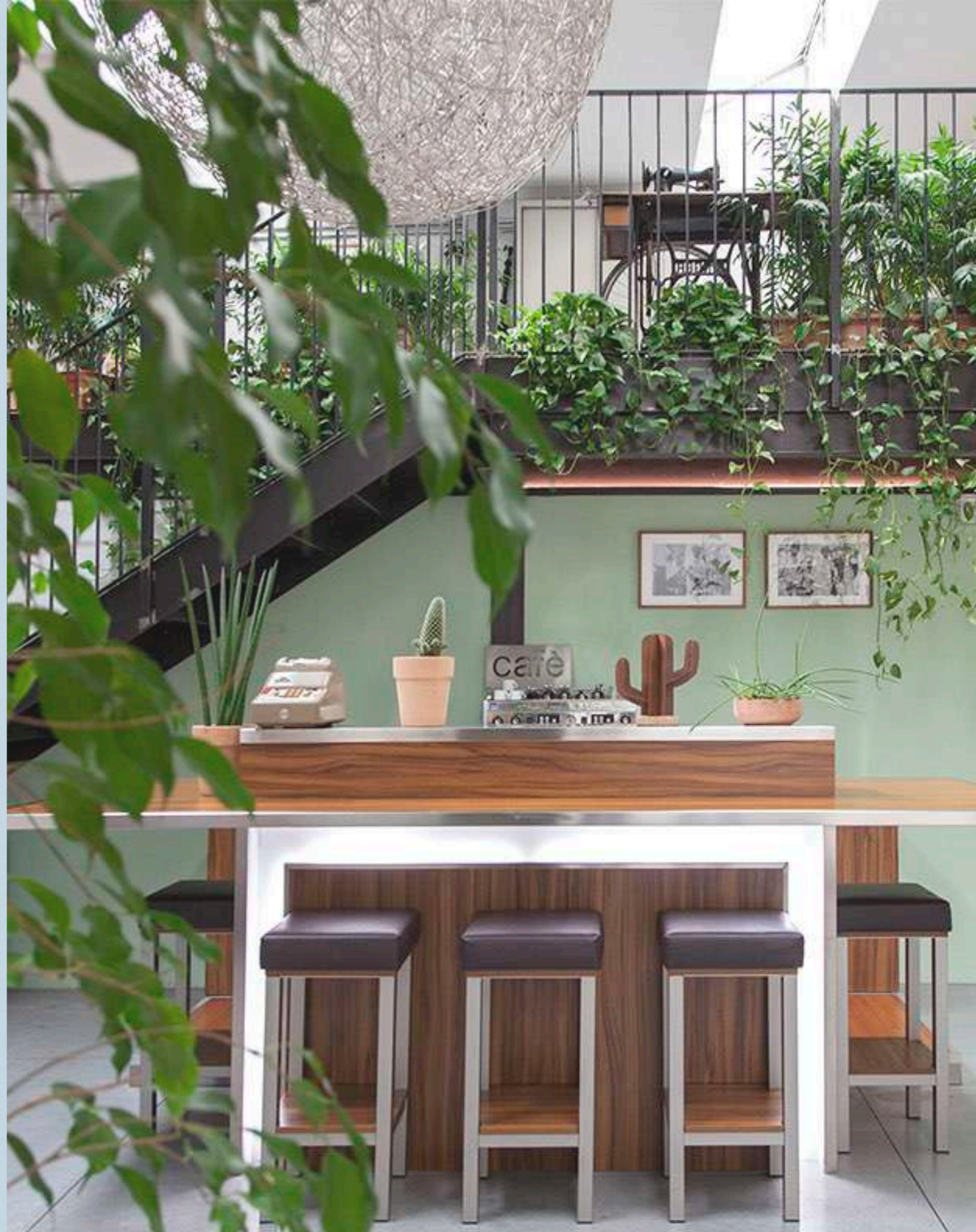
spazio3  
TRENTASEI  
STUDIOS

rental studios & location

NUMERO36 STUDIO

Viale Umbria 36, 20135 Milano

[www.spazio36.com](http://www.spazio36.com)  
[info@spazio36.com](mailto:info@spazio36.com)



# SERVICES

## EQUIPMENT

Spazio36 has an internal warehouse equipped with flashlights, continuous lights, grips, accessories, backdrops, and props. It is also possible to rent specific equipment not available in the warehouse through Spazio36's collaboration with specialized retailers.

## TECHNICAL ASSISTANCE

To ensure the realization of our clients' projects, Spazio36 provides a team of highly specialized professionals capable of guiding you throughout the workflow. Studio assistants, light and digital assistants, operators, streaming technicians, set designers, and more. All are rigorously competent and very friendly!

## LOGISTIC SERVICE

Upon request, our staff can manage the pickup and delivery of your shipments to our studios: technical equipment and various goods are safe with us.

## CATERING SERVICE

We strive to offer you the best even during break times through a selection of the finest catering services, capable of adapting to every specific need. Discover our services, from standard to deluxe formulas!

## ACCOMMODATION SERVICES

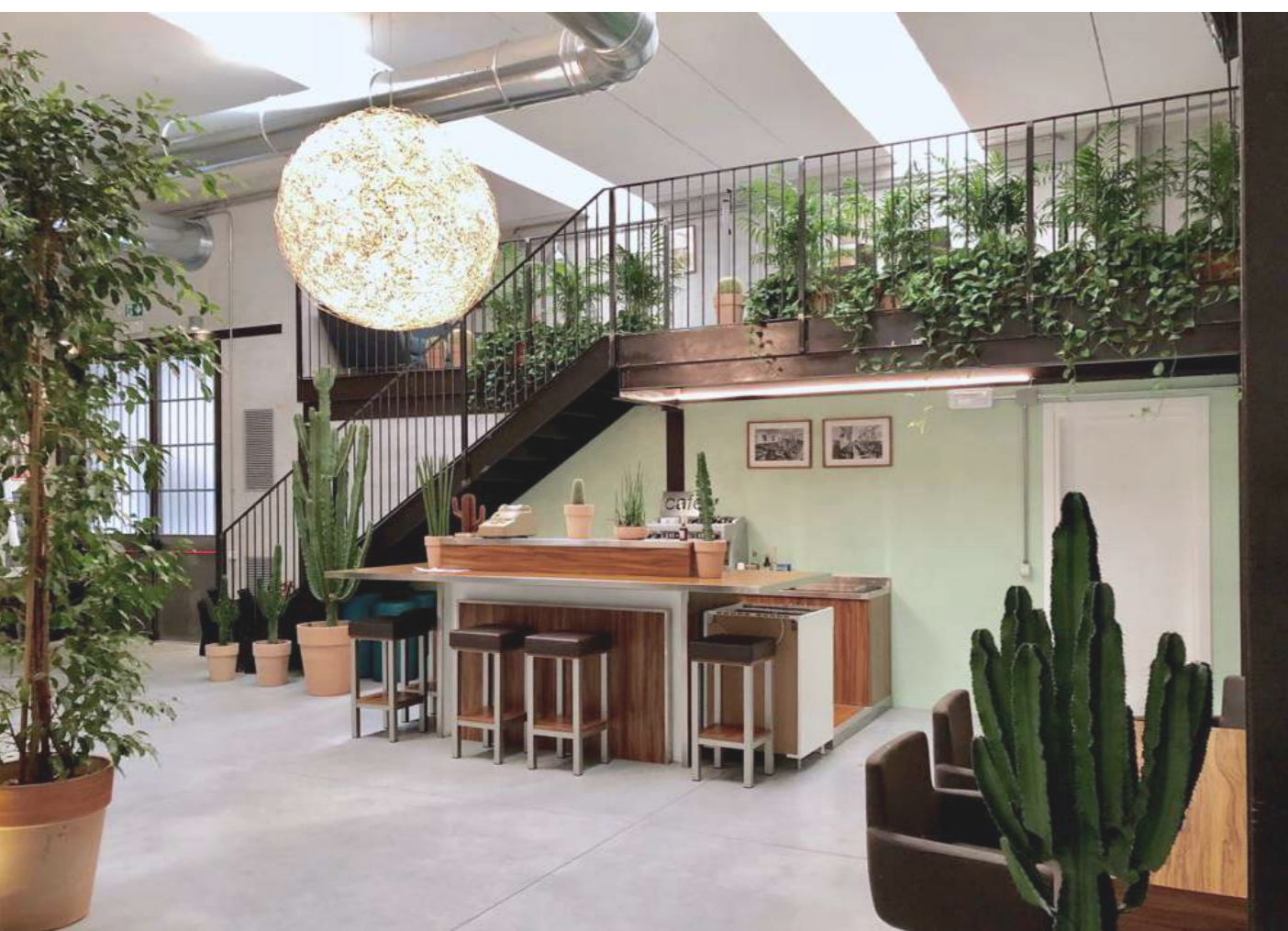
Thanks to Spazio36's collaboration with a specialized partner, it is possible to organize the overnight stay of the production crew in fully furnished and well-maintained accommodations located within the complex that houses our studios.



art is the highest form of hope



# NUMERO36 STUDIO



NUMERO36 STUDIO



# SPAZIO36 GREEN STUDIOS

SPAZIO36 has always considered the plant world as its primary source of inspiration for its activities. The modular, cooperative, distributed, and leaderless architecture typical of plants serves as a reference for our organizational structure. The "relationships" between the various components (modules) of the plant world teach us the importance of connection between ourselves and the rest of the world. For us at Spazio36, reality is about relationships.

Moreover, numerous scientific studies now demonstrate that plants have beneficial effects not only on air quality but also on concentration and psychological well-being. That's why all our spaces host various plant species: the simple sight of a plant brings calm and relaxation. To work and, above all, to live better.





**Located:** ground floor | **total area:** 300 sqm  
**ceiling height:** 6 meters | **Power:** 20 KW

**Facilities on the floor:** makeup station, two bathrooms, shower, kitchen/bar counter with electric stove, two refrigerators, relax area and office, free Wi-Fi, HI-FI system, air conditioning. Daylight/Completely darkenable | Raw cement walls, industrial-style quartz floor, 35sqm limbo, custom sets upon request.

**NUMERO36 STUDIO**









# CONTEXT

Prestigious Milanese industry, Lagomarsino has been producing calculating machines and cash registers for decades. The production facility on Viale Umbria now hosts various activities, maintaining almost intact its original urban and architectural characteristics.

For over seventy years, Lagomarsino was one of the most prestigious companies in the production of mechanical calculating machines. Founded in Milan in 1896 by Enrico Lagomarsino, the company expanded thanks to a dynamic sales organization, specializing in adding machines, calculators, and accounting machines that were initially imported from Germany and other European countries.

After the successful start of the commercial activity, in 1907 Enrico Lagomarsino decided to start its own production, building a large industrial plant on Viale Umbria. In the factory, initially named "Fabbrica Addizionale Italiana" to separate the existing commercial branch from the industrial one, 1800 workers were employed. After the founder's death in 1918, the company leadership passed to his son Luigi, who with considerable entrepreneurial spirit managed to further develop it. Before and during the years of the Second World War, Lagomarsino introduced two new product lines, contributing to the development of electromechanical calculators. In addition to calculating machines and cash registers, after the war, the company diversified its production activities, expanding further into the stationery sector with the manufacturing of fountain pens, pencils, stationery, and office supplies.

After the closure of the plant, in the 1980s, under the initiative of the Municipality of Milan, an industrial redevelopment of the area took place to offer new spaces to the secondary and tertiary sectors. Preserving the original buildings and the same urban structure, the intervention designed by architect Giorgio Fiorese allowed the insertion of twenty-seven new production units into the plant. The area of the plant, located between Viale Umbria, Via Lattanzio, Via Tito Livio, and Via Tertulliano, is still recognizable today, as well as the two-story noble building that housed the offices reserved for administration, located at the intersection with Via Tertulliano. Along the streets enclosing the lot, the large openings that allowed the influx of light for the sheds used for various stages of processing are still visible. Despite various renovation interventions, incorporating new production and commercial activities, the former Lagomarsino represents today one of the first and most successful examples of industrial reuse in Milan.





**NUMERO36 STUDIO**



Tel. +39 02 38299597  
Mob. +39 338 7231172  
Mail: [info@spazio36.com](mailto:info@spazio36.com)  
[www.spazio36.com](http://www.spazio36.com)

**Viale Umbria, 36, 20135 Milano, Italia**

**Filobus:** 90 / 91 / 92 + 150 mt a piedi  
**Tram:** 16 + 250 mt a piedi  
**Metro:** M3 LODI (linea gialla) + 500 mt a piedi